

NEBRASKA BEEKEEPERS ASSOCIATION

www.nebraskabeekeepers.org



March Beeline 2009

2008 Board of Directors

President:

Mike Slater,
118 Robinhood Ave.
Plattsmouth, NE 68048,
Ph. 402-660-6299,

Vice President:

Cheryl Osterloh,
7519 N 285 Ave Circle
Valley, NE 68064
cheryl.osterloh@gmail.com

Treasurer:

Warren Nelson,
2839 N 46th,
Lincoln, NE. 68504,
Ph. 402-466-8173

Secretary:

Joann Vasko,
13324 Madison,
Omaha, NE 68137,
Ph. 402-895-3766

Program Director:

Mike Bush,
8201 214th St,
Greenwood, NE 68366-2303,
Ph. 402-786-5841,

Newsletter Editor:

Keith Nielson,
865 Leonard Ave,
Polk, NE 68654, Ph. 402-765-2391,
kl Nielson@windstream.net

Business Advertising Rates

Full page:

Yearly-\$1200
Six months-\$720
Monthly-\$120

Half Page

Yearly-\$600
Six months-\$360
Monthly-\$60

Quarter page

Yearly-\$300
Six months-\$180
Monthly-\$30

Business card

Yearly-\$150
Six months-\$90
Monthly-\$15

Classified ads by members free.

All ad material needed print ready by 20th of each month. If purchasing ad for full year ad layout can be changed each issue before the 20th of the month. Acceptable formats PDF, Microsoft Office Word, JPEG, TIFF. All ads must be paid for before they are run. Issues of the newsletter are posted on our association web site @ www.nebraskabeekeepers.org
For more information contact the editor.

Presidents Message:

This is it folks. The last article I'm submitting from Baghdad. I leave the first week in March to start the process of returning back home. It truly has been a long year. Made a lot of friends here over the last year and have seen most of them redeploy back to the states already. I also made some new ones that will remain after I leave. They say when you are surrounded by strangers then it is time to leave. Only part of that is true. You do see a lot of new faces. The new troops that arrived a few days ago are easy to spot. They have new uniforms, new patches, and have that lost look from the shock of suddenly placed in to an environment of 20 ft high concrete T-Walls and razor wire. You have to see and feel it to fully understand what it's like; the smell of the burning trash piles in the morning, the taste of the dust in your mouth, walking on concrete, gravel or compacted dirt, and the heat. I think one of the first things I'm going to do when I hit the airport in the states is take a nice long drink out of a water fountain since all I've been drinking out water bottles for the last year. And then maybe just find a patch of grass and feel what it is like to walk on it once again. Or even just to see something else that's green besides the tops of date palms
wi79431(s)-1.7465(i)-17465(i)-1p -0.956417(a)3.15789(t)-2.øear.

~~Mikkomder..~~ ee

Secretary's Corner:

Meeting notes from the Feb 09 NBA meeting.

Cheryl called the meeting to order.

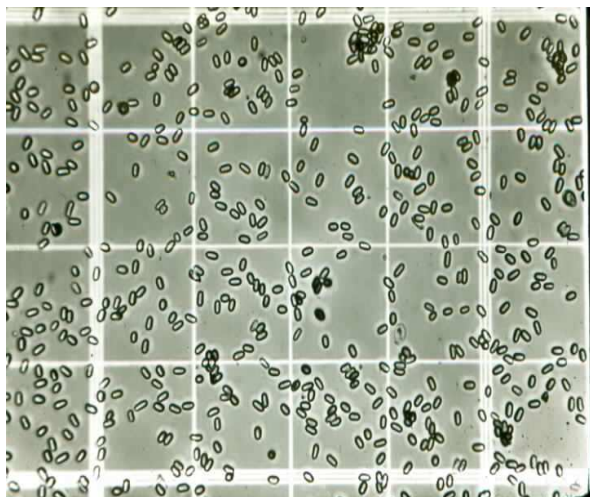
1. National Honey Queen. Marion Ellis and his wife will be hosting the National Honey Queen, but requested a backup host couple in case their twin grandchildren are born during that time. The hostess couple would need to provide lodging, meals, and transportation to the Fair and back for the 2 days. No takers so we tabled the discussion to let people consider the request.
2. Honey pots. Cheryl indicated we are looking for a provider of our State Fair honey pot prizes. The Association will purchase 12 pots that are glazed and have an engraving such as "Nebraska Beekeeper Association 2009". Please provide suggested sources to Cheryl.
3. Beekeeping library. Bill and Judy suggested the Association starts a library of beekeeping materials for checkout. Suggested topics include soaps, queen rearing, videos, and other useful information. Discussion covered alternatives to carrying a box back and forth each meeting, to including donating the books to the Gretna library. Cheryl agreed to look into the feasibility of doing this.
4. Newsletter advertisements. Warren opened up discussion regarding the sale of ads in our NBA newsletter. Warren listed the reasonable prices to charge for the various sizes that Keith had researched. A vote was held and agreed upon.
5. Donation to UNL. A move was made to make our annual donation to the UNL Entomology program. Marion relayed that these funds are used to provide students professional development by giving the opportunity to attend courses such as queen rearing or conferences such as the ABF. A motion was made to donate \$2000 and a vote approved the motion. A short discussion occurred regarding the idea of providing similar sponsorship of the NBA president to attend national symposiums. It was decided to wait a few years on this idea until we work out how the new State Fair honey booth works out as far as making money.
6. State Fair. We need volunteers to work this year. Our booth is very popular; it's even a required stop on "school days". As our only fund raiser, it's important to support this effort with volunteers.
7. 2009 meeting schedule. Since Mike Bush is in Florida, Cheryl led the discussion on getting volunteers for upcoming meetings. The March 29th meeting will be in Glenwood Iowa and will discuss beeswax handling. Bill and Judy Lillie agreed to host the May 13th meeting near Beatrice. The June meeting is cancelled so everyone can sign up to attend the Value Added workshop. Jack agreed to host the July 15th meeting and Mike Terneus agreed to host the Aug 12th meeting. There are more opportunities for those interested in helping host a meeting!
8. Guest speaker: Marion Ellis.

Marion gave a wonderful presentation on the study he recently completed with Louis Chapon on the prevalence of Tracheal mites and *Nosema* for Midwest beekeepers. Beekeeping has certainly been challenging, especially since 1984. Because of our changed practices, however, things are getting better! In order to keep ahead of issues it is important to come to the beekeeper meetings and take advantage of any courses.

The study covered *Nosema Apis*, *Nosema Ceranae*, and Tracheal mites, three problems we face that cannot be easily seen in the beeyard. Approximately 332 samples were taken from NE, ND, SD, and WI of foragers (*Nosema* is more prominent in foragers.) Only 9 colonies were seen to have Tracheal mites (5 of these from WI) so Marion concluded that these were not much concern for our area. The study decided to focus on *Nosema*.

Nosema Apis is a parasitic fungus that has a seasonal pattern which peaks in late spring. It is spread by oral/fecal waste transfer. With package bees, this becomes a greater problem because they have no way to expel waste in the open. Marion showed the process of testing for *Nosema Apis*. Colonies with *Nosema Apis* exhibit dwindling of numbers in the spring, crawling/lethargic bees, and premature queen supercedure. This is caused by the QMP gland in the queen and the brood food gland in workers being adversely affected.

Nosema Ceranae only recently has been associated with European honey bees. Losses are progressive with little, or no, signs of dysentery. There seems to have been a huge growth of this problem between 1999 and



2 Nosema spores viewed on grid slide through microscope (courtesy of Dr. Ellis)

2004. *Nosema Ceranae* adversely affects the ability of a bee to live through stress. It manifests itself primarily in summer, with a rapid decline of bee population. Typically, *Nosema Ceranae* kills within eight days.

Results from the local study showed an average of 1.26 million spores per bee, far above the dangerous level. Those colonies treated with Fumagillin were found to have substantially lower spore count (approximately 0.1 million per bee.) Marion's initial investigation points to *Nosema Ceranae* possibly supplanting the presence of *Nosema Apis*. CCD seems to have classic *Nosema* symptoms such as neighboring beekeepers not

always being similarly affected. While *Nosema* may not be the driving force behind CCD, it may certainly be a contributing factor.

Marion then discussed possible management practices to thwart these problems. These practices include the installation of a top entrance during winter to allow flights to cleanse the hive of dead bees. A replacement regime of combs every year and the scraping off of top bars also helped. Marion cautioned against the practice of placing supers from dead-outs on good hives in early spring. Fumagillin-B, when administered according to the label, is only recommended for treating packages in early spring.

In summary, we should make *Nosema Ceranae* study a priority. Tracheal mites don't seem to be as much of a problem. Our best solution is better, stronger, bees.

After Marion's presentation, we had a Q&A session.

Q1: When should we use pollen substitute?

A1: Used primarily by migratory beekeepers or when making splits, we probably don't need to be using pollen substitute in this area of the country.

Q2: Is the same dose of Fumagillin as effective as *Nosema Ceranae* as with *Nosema Apis*?

A2: Yes.

Q3: Are "bee feeds" the same as pollen substitute?

A3: No. Use caution if choosing to use any of these products, especially those containing real pollen that has not been gamma irradiated, as this may be a carrier for *Nosema Ceranae*. Several products on the market indicate possible help against *Nosema*, but tests have not produced this result.

Q4: Should my observation hive be making brood without the presence of pollen?

A4: Body composition of bees changes throughout the year. During the winter months, fat bodies fill the worker bees and permit them to carry on through an absence of pollen.

Q5: What are some suggestions for what we ought to be doing at this time of year?

A5: Honey is a wonderful heat sink, absorbing heat during the day and regulating hive temperatures at night. As honey stores are depleted, it's harder to maintain colony warmth. Winter cartons really help between now and early April. Make the boxes with an air gap to increase effectiveness (don't forget an entrance!) You can also place insulation board, from a home supply store, above the inner cover. This all helps minimize stress while brood is present.

9. Glen Gowen gave a short presentation on how to use a shaking box with powdered sugar to reduce mites in the hive.

The meeting was adjourned. Submitted by Mike Terneus

RENEWAL TIME NOTICE

Membership is up for renewal in March: Charles Beardslee, Samantha Krikac, Warren Nelson, and Nancy Meyer

Membership up for renewal in April: Jan Bergt, Austin Gabriel, Jim Keen, Mike & Deb Kennedy, Nealy Branting, Granada Dooley, and Emil Pierson

Membership Past Due in January: *Katie Swoboda, Mike Slater, Spencer Hammer, Thomas Golsom, Cheryl Osterloh, Vicki Krotz. This mailing will be last issue of the Beeline if dues are not paid.*

Membership Past Due in February: *Joe Strecker, Mike Brahms, Tom & Linda Schwarz, John Cidlik, Bill & Judy Lillie, Ralph Tate*

The association is trying to get all memberships due on in January of the current year. Also we are trying to be Eco-friendly by delivering the newsletter via e-mail to reduce paper cost. Members who receive their newsletter via e-mail receive it at least 2 days earlier than those by United States Postal Service.

Classified Advertisements

For Sale:

Dadant stainless steel settling tank with baffle 31 inches diameter and 28 inches high, Maxant electric Chain Uncapper model 1700, Walter T. Kelley wax melter with stand and bucket. Dadant Mini Melter with stand, steel food grade 55 gallon barrels for honey storage. Contact Warren Nelson at 402-466-8173 or email wnelson193@neb.rr.com.

Equipment for Sale: Ron Cowden was a beekeeper in Lincoln, NE. He recently passed away and his family has donated all of his beekeeping equipment to the University of Nebraska - Lincoln Department of Entomology. The University does not need the equipment so they are selling everything with the money going to the Department of Entomology. The equipment list is as follows:

Dadant 25 gallon water jacketed bottling tank with electric stir system
2" Metal Honey Gate

Woodman style Galvanized 45 frame Radial Electric Extractor

2-55 gallon Steel Barrels with gates (could be used for mixing and dispensing syrup)

Should you have an interest in any of these please contact Warren Nelson at 402-466-8173 or e-mail

wnelson193@neb.rr.com. Warren has agreed to sell the items for the University with the proceeds going to the Department of Entomology.

For Sale:

Five frame nuc's or 3 lb bee packages first come first serve basis expected delivery date May 15th. Also available bulk honey. Used eight frame bee equipment for more information contact Pat Chandler 308-880-1733 or e-mail Chandlers Sandhill Honey chandlercloverhoney@yahoo.com

Better Way Wax Melter, Leon Schuette, 26143 County Rd 8 Herman, NE 68029 ph. 402-654-3525

Wanted Colonies of Bees

Would like to buy complete colonies of bees, Mike Toukan, Phone 308-379-5170

Wanted Bees

See the January 2009 issue of the Nebraska Beekeepers Association Beeline or got to

<http://www.nebraskabeekeepers.org/content/NBA109.pdf>.

Upcoming Events:

March 6 & 7, 2009: Missouri State Beekeepers Association and the Kansas Honey Producers joint meeting at the Marriott Hotel, Overland Park, KS. Guest speakers will be Dr. Clarence Collison from the Mississippi State University he is the head of the Department of Entomology and Plant Pathology, Dr. Rudolf Jander (Dr. Karl Von Frisch's last Doctoral Student) now at the University of KS professor in Animal Behavior., Dr. Orley (Chip) Taylor University of Kansas professor of Insect Ecology, Dr. Deborah Smith- Associate Professor in entomology Department of Ecology and Evolutionary Biology University of KS (and one of the foremost authorities of bees of the world), Danny Najera -doctoral student University of Kansas- Department of Ecology and Evolutionary Biology and Dr. Ron Fessenden co-author of the new book the Honey Revolution. There will also be a representative from the National Honey Board.

The meeting will be held at the Marriott Hotel at I-435 & Metcalf. To make your reservation call 913-451-8000 and mention the code words American Beekeepers to get the rate of \$85.00 + tax. You must reserve your room by February 12th For more information call Joli Winer at 913-856-8356 or visit the website of nekba.org. or the website of the Missouri State Beekeepers. Program and registration forms are available by mail or at the website.

March 29, 2009- Mark and Debra Swirmicky in Glenwood, IA, at 1pm. Lunch will be served, everything provided, so come hungry. The meeting topic will be everyone's beeswax...I mean business; we will discuss the many facets of beeswax products. We would like this to be an interactive group, so if you have experience, tips, products, or tools to share, please plan to bring them and be prepared to discuss them with the group. The meeting will be held inside so cold or wet spring weather will not interfere with a fun afternoon working with wax.

Please RSVP for a head count for lunch, call 712.527.9152 or email lsprairie@futuretk.com or lsmeadow@futuretk.com.

The Swirmickys live at 25977 Grace Circle, Glenwood, IA, phone number 712.527.9152.

You are welcomed to park anywhere on the blacktop or concrete drive or in or around the circle on the road. Please do not park on the grass yard or the sides of the drive as it will tear up the sod or the backfill for the drive!

From Bellevue, LaVista, Papillion, take HWY 370 East across the Missouri River and cross over I-29. Follow the directions below as you turn right (south) onto Old HWY 275 which becomes 221st Street.

From Omaha: take I-80 East to South I-29 in Council Bluffs, IA. Take Exit 42 and turn left (east) onto HWY 370. Go 2.2 miles to the stop sign and turn right (south) onto Old HWY275 which becomes 221st St. Go 2.8 miles and turn left (east) at the Mineola sign onto Barrus Road. Go 3.2 miles and turn a very sharp right back turn (south) onto 250th Street. Go 4 miles to the stop sign and turn left (east) onto Gaston Road. Go .6 mile and turn right (south) just beyond a bridge as the road goes up hill onto 257th St. Follow the gravel road as it turns into Grace Circle, .3 mile up the hill. The house is located on the right side of the road just before the "Circle". There is a large lone star on a stone column at the entrance to the drive and a red star on the house.

From Nebraska City:

Take Rt 2 across the Missouri River to Iowa. Turn LEFT onto I-29 North. Take the US-34 East exit, EXIT 35, toward GLENWOOD. Turn RIGHT onto US-34 E. 3.5 mi. Take the US-275 N/US-34 BUSINESS/IA-385 S ramp toward GLENWOOD. 0.4 mi. Turn LEFT onto US-34 Business Route E/IA-385 N. Continue to follow US-34 BR E. Turn RIGHT at the BP Station/traffic light, onto SHARP ST/US-34 BR. Continue to follow US-34 BR. 0.8 mi Just past the Glenwood State Park on the right and at the new school on the left, Turn LEFT (north) onto CR-L45. Stay on the blacktop as it winds to the east and turns to the north 2.1 mi Turn RIGHT (stay on the blacktop as CR-L45 turns a sharp right into CR-H20), Gaston Road. 1.2 mi Turn RIGHT onto 257TH ST/GRACE CIR. Follow the gravel road as it turns into Grace Circle, .3 mile up the hill. The house is located on the right side of the road just before the "Circle". There is a large lone star on a stone column at the entrance to the drive and a red star on the house.

April 11, 2009: Association Meeting & Youth and Other Beginners Beekeeping Workshop, Part 2, ARDC at Mead, Nebraska, practical exercises in beekeeping, presented by Dr. Marion Ellis UNL Entomology.

May 13, 2009: Monthly Meeting at Bill and Judy Lillie near Beatrice. Topic TBA

June 12-13, 2009: Nebraska Value-Added Products Workshop: The University of Nebraska will offer a Value-Added Products Workshop. The first day will cover techniques for managing bees for comb honey production and techniques for producing creamed honey. Day 2 will be devoted to mead making. Presenters will include Ken Schramm, Marion Ellis, Joli Winer and Cecil Sweeney. Registration is \$25 per day or \$45 for both days and includes lunch and a workbook. Program details and registration information can be requested from jcunningham@unl.edu or by calling Jeri Cunningham at 402-472-2123.

July 9-11,2009: Heartland Apiculture Society, Oberlin College, Oberlin, OH.

July 15, 2009: Monthly Meeting at Jack Eagers, near Ashland. Topic TBA

August 3-7, 2009: Eastern Apiculture Society- The Brethren Beekeeping, Without Chemicals, Holiday Valley, Ellicottville, New York

August 12, 2009: Monthly Meeting at Mike Terneus near Bellevue, NE. Topic TBA.

August 17-20, 2009: Western Apiculture Society-Dry Creek Best Western Inn, 198 Dry Creek Road, Healdsburg, California, USA 95448

Treasurers Reports

Beginning Balance:	\$14,645.12		
Income		Expenses	
Interest	1.28	Office Depot	11.75
Simons	23.00	Postage Keith Nielson	15.98
Soule	45.00	Bee Culture	21.00
Schmit	12.00	Dadant	329.02
Keep	12.00	Bee Cards Postage	24.06
Scheerger	12.00	NBA Fund	2000.00
Bernhardt	12.00	Postage Keith Nielson	54.47
See	24.00	High Plains Comm Sch	308.57
Patterson	12.00	Total Expenses	2760.85
Cooper	24.00		
Williams	12.00	Ending Balance	\$12282.60
Turpel	24.00	Package Bees- If you have not ordered your bees already you need to do so by March 13 th . Prices on packages have increased this year into the range of \$77-\$79 depending on the supplier. Draper Super Bee delivery dates are April 3-4 and April 17-18 th . Honey Bee World delivery dates are April 3 and April 17 th . A \$40.00 deposit is required on all packages. They will order Italians, Minnesota Hygienic and Carniolans.	
Kasyanov	12.00		
Mraz	12.00		
Metcalf	24.00		
Swirmicky	24.00		
Schwarz	12.00		
Conley	12.00		
Arbaugh	13.00		
Arbaugh	12.00		
O'Hara	28.05		
Eager	12.00		
Calkins	12.00		
Cash	12.00		
Total Income	\$398.33		

Letters to Editor

Thanks for your helping in getting rid of the bee keeping items. I had a guy come to get it today, Sunday Feb 8th. Again thanks for your help. Gail Nason

For the good of the Association

Charlie Simonds and Herschel Staats have been conducting a yearlong class that has met monthly for beginning beekeepers at Southeast Community College in Lincoln which has about 14 students. It was brought to my attention that we should maintain a mentors list for new beekeepers to help them through their first year as a beekeeper. If you would like to be a mentor to a first year beekeeper please e-mail or call Keith Nielson and he will compile a list of mentors for new beekeepers.

Swarm season is coming in the months of April, May and June. If you are interested in collecting swarms of bees around your area please contact Keith Nielson with your information to include the county that you live in. Keith will compile a list that can be sent to county extension agents because our state web site tells people to contact their local extension office.

I pose this question to all of the members of the association: What can the officers of this association or our associations do to meet your needs as a beekeeper in our state? Please send your comments to our President, Vice President and Program Director, because without your input we will continue business as usual. I have made my thoughts known as to locations for meetings further west but until the wheels squeak they will not be greased. Keith Nielson

For the Good of the Association

Recipes From National Honey Board

Sweet 'n' Sour Fish Fillet

- Makes 4 servings -

Ingredients

- 1 lb. fish fillet, sliced, your choice of fish
- 1 cup water
- 1/2 cup raisins
- 1/4 cup honey
- 1/4 cup corn flour
- 12 cobs baby corn
- 1 red sweet pepper, cut into strips
- 1 green pepper, cut into rings
- 1 medium carrot, peeled and cut into strips
- 1 red onion, cut into wedges
- about 1 inch ginger root, cut into strips
- 2 Tablespoons vegetable oil
- 1 teaspoon tomato paste
- Vegetable oil, for frying
- Salt and pepper, to taste



Directions

Place corn flour in a shallow dish and dip fish fillet in batches until well coated. Heat oil in a large skillet and fry fillets until brown. Place on paper towels to remove excess oil.

Heat 2 Tablespoons vegetable oil in large sauce pan. Stir in ginger and onion until the aroma is released, and then add in raisins, carrot, and sweet pepper, stirring after each addition. Finally, add corn, tomato paste, salt and pepper. Pour in honey and water. Slowly bring mixture to a boil over medium heat, then lower heat and add fried fish fillets and cook until heated through.

Serving Suggestions

Serve with cooked, plain rice and garnish with lemon slices, radish, and herbs.

Note: Honey should not be fed to infants less than one year of age. Honey is a safe and wholesome food for children and adults.

Nebraska Beginning Beekeepers Scholarship Class



3 Stephanie Steele gluing the box joints on a hive body

The Nebraska Beekeepers Beginning Beekeeper Scholarship class met February 1st at the High Plains Community School Ag Shop to prepare their hives for bees. The class was sent via a Polycom to the Sydney UNL Extension Office where Hestin Soule joined the rest of the scholarship participants. This enabled him to see and hear the demonstration that was presented in Polk. The Polycom allows more than one site to see, hear and interact with questions and discussions in real time. The program included assembly of hive bodies and frames, installing crimped wire foundation, and wiring frames and embedding wire into the foundation. Housel position was also shown to the audience and a method of marking frames to

easily identify the housel position on a frame with foundation. When the scholarship participants completed the day they took home with them a screened bottom board, 2 deep hive bodies, 2 medium hive bodies, 20 deep pro frames, 20 medium pro frames, inner cover, telescoping cover, division board feeder, bee brush, smoker, gloves, hive tool and a pollinator jacket. Dadant and Mann Lake Ltd have helped sponsor this program by providing protective gear and equipment.



4 Trevor Devries and family at the workshop putting a hive body mutually



5 Sydney VanDiest putting a hand hold cleat on a hive body



6 Miranda Kegley preparing to assemble hive bodies.

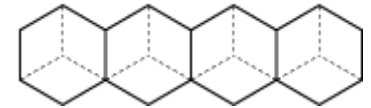
Lancaster UNL Extension hold Beginning Beekeeper Class

On March 21st Lancaster Count UNL Extension hosted a beginning beekeepers class with 71 people in attendance. Dr. Marion Ellis presented the workshop and it was taped for future use to create a beginning beekeeper DVD. Barb Ogg who organized this event has been a faithful supporter of annual presentations about beekeeping.

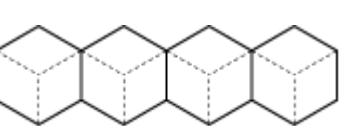
Housel Positioning

By Keith Nielson

Housel positioning was brought to my attention during Dee Lusby's presentation on Saturday morning of the chemical free workshop that the association sponsored last November. It is claimed that with proper positioning of the Y in the hive body bees are calmer, raise brood quicker, reduces mite infestations and are more productive. Since then I have done some



8 Side A of foundation with Y down



7 Side B with Y up

internet research on Housel positioning with varied results. I must admit all of the beeswax foundation that I have purchased, along with plasti-cell and pro-frames have a definite Y pattern in the cells. When the foundation is turned from left to right the direction of the Y changes to either upright or upside down. Michael Housel who discovered the positioning of the Y noted that the center comb was

neither up nor down but went left and right. With an even frame number in a Langstroth hive you cannot create an exact center comb which naturally occurs with feral bees or top hive bar scenario.

How can beekeepers make it close to what naturally occurs? Dee proposed that frames 5 and 6 the Y be down facing each other. Then the rest of the frames on the left of 5 all face the same direction as 5 and all the

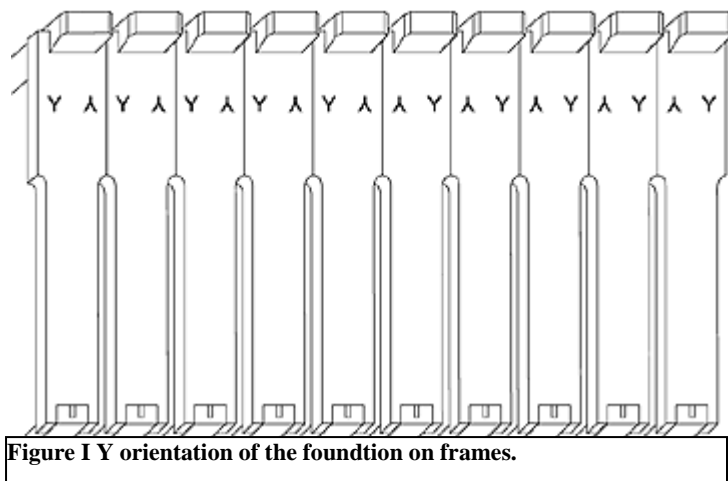


Figure 1 Y orientation of the foundation on frames.

frames right of 6 faces the same direction of 6. So your frames should look like the frames in figure 1. How am I marking my top bars on my frames? I place a V across the top bar it the bottom of the V on the side that I have one point of the Y and the top of the V on the side which has two points of the Y. Then the sequence of 10 frames in the hive would look like this: >>>><<<<. You could also say that Side A above always faces to the center of the hive. There are other ways of marking your top bars out there, you just need one that you can understand for yourself. A part of the above information was taken from the writings of Dee Lusby at

<http://www.beesource.com/pov/lusby/housel.htm>.

As I continued my search on Housel positioning I found that not everyone agrees that this is a legitimate finding or that it works in all situations. When I went to <http://www.bwrangler.com/shou.htm> written by BWrangler, this authors perspective was from Top Hive Bar (THB) hives without foundation. He could not see any difference in the position of the Y in THB. Will I use Housel positioning in my Langstroth hive? You bet I will since I use foundation. Would I try it in THB hives, maybe but I don't have any yet.

Nebraska Beekeepers Association Membership and Membership Renewal Form

Please fill out the following information completely and legibly by printing the information

NEW MEMBER [] RENEWAL OF MEMBERSHIP [] 1 YR @ \$12 [] 2YR @ \$24[]

DATE _____

NAME(S) _____

Birthday _____

ADDRESS _____

CITY _____

STATE _____ ZIP _____

Phone _____

E-mail address _____

Please send my newsletters by e-mail. Please send my newsletter by the postal service.

Make checks payable to the "Nebraska Beekeepers Association"

Mail to: Keith Nielson, 865 Leonard Ave, Polk, NE 68654

* Dues are payable by January 31 for the current year running from January 1- December 31. *

** Dues are prorated for new members only at the rate of \$1 per month through December 31. **

*** Special rates on "Bee Culture" and "American Bee Journal" with membership to the state association.***

AMERICAN BEE JOURNAL	ASSOCIATION MEMBER SUBSCRIPTION	SAVE 25%
Association _____	Secretary's Name _____	
Subscriber's Name _____	Address _____	
Address _____	City _____	
City _____	State, Zip _____	
State, Zip _____		

<input type="checkbox"/> NEW	<input type="checkbox"/> RENEWAL	U.S.	<input type="checkbox"/> 1 Yr. - \$19.10	<input type="checkbox"/> 2 Yr. - \$36.15	<input type="checkbox"/> 3 Yr. - \$50.95
(PRICES GOOD THROUGH DEC. 31, 2009)		Canada	<input type="checkbox"/> 1 Yr. - \$24.10	<input type="checkbox"/> 2 Yr. - \$46.15	<input type="checkbox"/> 3 Yr. - \$63.95
		Foreign	<input type="checkbox"/> 1 Yr. - \$37.10	<input type="checkbox"/> 2 Yr. - \$72.15	<input type="checkbox"/> 3 Yr. - \$104.95
Return white copy to: American Bee Journal, 57 S. 2nd St., Hamilton, IL 62341			Retain yellow copy for your records.		

Please send subscription form and payment directly to the publisher listed on the magazine form.

ROOT PUBLICATIONS	ASSOCIATION MEMBER SUBSCRIPTION <i>Bee Culture Magazine</i>
Please Print Clearly	
Association _____	Secretary's Name _____
Subscriber's Name _____	Address _____
Address _____	City _____
City _____	State, Zip _____
State, Zip _____	Comments _____
Phone #	For Office Use Only Acct. # _____
<input type="checkbox"/> NEW	<input type="checkbox"/> RENEWAL
<input type="checkbox"/> 1 Yr. - \$21.00	<input type="checkbox"/> 2 Yr. - \$38.00
<div style="border: 1px solid black; padding: 2px; display: inline-block;"> Canada - add \$15.00 per year All other foreign add \$20/year </div>	
Return white copy to: Bee Culture, Subscription Dept., P.O. Box 706, Medina, OH 44258 *Please discard any other forms. Use only this form.* Prices subject to change without notice.	

Please send subscription form and payment directly to the publisher listed on the magazine form.

If you are receiving this newsletter as a complimentary copy after attending a workshop or if and you are a member of the association and you have an e-mail address please send it to knielson@windstream.net so you can receive it via e-mail. Postage is going up in May and this will help reduce our cost of postage. Benefit to you is you will receive your newsletter 2-3 days before the mailed copy. Editor

Editorial: The scholarship winners built their hives on February 1st and are ready for bees. In visiting with Warren Nelson he told me we had a good turnout for the Beginning Beekeeper workshop that was held in Lincoln on the 21st of February. We are finally into the third month of the year and as an association we have had a fast start to the new year. After the news coverage about the Beekeeper of the year award I have had several e-mails and inquiries into beekeeping within the state of Nebraska and some mail from friends that I had lost touch with. Amazingly they have been in all parts of the state. On February 23rd I had an opportunity to represent our vocation by being a guest presenter for a Webinar that was hosted by the Hall County UNL Extension for 4-H members. If you are not familiar with the technology of internet video communications you may be asking what is a Webinar? This technology utilizes a web camera connected to a computer and a voice connection on a conference call which can connect to a large number of sites. I was told that for this Webinar that we were connected to 30 sites with 3-4 4-Hers and their parents at the sites.

With having some nice warm days in February I have taken the time to check some of my hives. I have been surprised at what I have found so far. I had one location with three hives that I was not able to get to last fall because they were up at the top of a hill in a pasture and it rained and snowed enough that I could not get to the hives without a long hike. In one of those hives was a pair of the largest field mice I have ever seen. I knew that I needed to reduce the entrance to the hive last fall but did not get it done. The hives that I had made entrance reducers for had them pull off of the bottom board so I had a second hive with mice. Since this incident I have replaced my bottom boards with new screened bottom boards with a 3/8 entrance and some 1/2 hardware cloth over the opening. Plus this new screen board replaces the landing zone with 3/8 plywood to reduce light into the hive body. Another hive winter killed because the cluster was over brood and did not move from the south side of the hive to get to honey reserves. This next week I have four hives to check yet when the temp warms up then I can decide what hives I want to split or repackage. I am still working on putting new foundation in frames and making hive bodies, and screened bottom boards for this next year.

Well I have a few honey sales pending with people who want to make mead. When those sales are finalized I will be down to a short supply of honey. In visiting with other members it sounds like that the supply is becoming limited. What a sweet thought.

Keith E. Nielson

Editor, Nebraska Beekeepers Association

Nebraska Beekeepers Assoc-Beeline

c/o Keith Nielson

865 Leonard Ave

Polk, NE 68654

